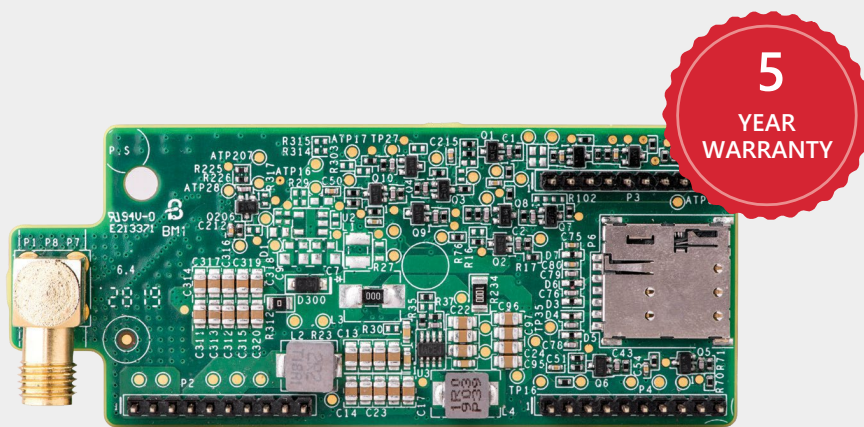


# Cellular Plug-in with Data Plan

For Europe



COMMUNICATION

## Cellular Internet Connectivity for Commercial and Residential Installations

- Compatible with SetApp-enabled inverters
- Connects SolarEdge inverters wirelessly to the internet
- No need for internet infrastructure at site
- Installed within the inverter enclosure for outdoor resilience, or in the communication gateway
- Supports high bandwidth monitoring of inverters, optimizers, batteries, meters and weather stations
- Enables remote analysis and troubleshooting
- 2-year data plan is included
- Optional 1-year extension plans after the original 2 years plan expires<sup>(1)</sup>
- Comprehensive coverage<sup>(2)</sup> in EU

# / Cellular Plug-in with Data Plan and Extension Plans for Europe

Part Number	CELL-B-R02-EU-R-S3, CELL-B-R02-EU-R-S5		UNIT
Model Number	CELL-B2		
COMPATIBLE INVERTERS	SEXXXX-XXXXXBXX4, SEXXXXK-XXXXXBXX4 (INVERTERS WITH SetApp CONFIGURATION)		
Monitoring	Continuous connection with 5 minute telemetry from all connected inverters		
Supported Residential Systems (CELL-B-R02-EU-S-S3)	1 inverter, up to 45 power optimizers, and 1 meter		
Supported Residential StorEdge systems (CELL-B-R02-EU-S-S3)	1 inverter, up to 30 power optimizers, 2 batteries and 1 meter		kW AC
Number of Monitored Inverters with a single Cellular Plug-in	Commercial: Up to 32 inverters, limited by the system AC size <sup>(2)</sup> Residential: 1 inverter		
Supported Commercial Systems (CELL-B-R02-EU-S-S3)	< 50 Up to 2 inverters, up to 94 dual power optimizers, and 1 Export/Import meter		kW AC
Supported Commercial Systems (CELL-B-R02-EU-S-S5)	< 500 Up to 18 inverters, up to 931 dual power optimizers, and 1 Export/Import meter		kW AC
Data Plan Duration	2 years prepaid plan (Optional extension plans can be purchased after the 2 year plan expires )		
Extension Data Plan Duration	1 year prepaid plan (CELL-R01-EU-EXT-S3)   1 year prepaid plan (CELL-R01-EU-EXT-S5)		
RF PERFORMANCE			OPERATING FREQUENCY
LTE Cat-1 FDD	Band/ Freq (MHz)	Modern Transmit / Modern received	
	2100 (B1)	1920-1980 / 2110-2170	MHz
	1800 (B3)	1710-1785 / 1805-1880	MHz
	2600 (B7)	2500-2570 / 2620-2690	MHz
	900 (B8)	880-915 / 925-960	MHz
	800 (B20)	832-862 / 791-821	MHz
	700 (B28A)	703-718 / 758-773	MHz
WCDMA	2100 (B1)	1920-1980 / 2110-2170	MHz
	900 (B8)	880-915 / 925-960	MHz
GSM	900 (EGSM)	880-915 / 925-960	MHz
	1800 (DCS)	1710.2-1784.8 / 1805.2-1879.8	MHz
Maximum transmit power	LTE FDD	23 dBm ± 2dB	
	WCDMA	24 dBm +1dB/-3dB	
	GSM	33 dBm ± 2dB	
Receiver Input Sensitivity Cat-1	LTE FDD	-97	
	WCDMA	-109	
	GSM	-108.6	
Bandwidth		1.4 - 20	
Modulation	LTE	Downlink: QPSK\16QAM\64QAM, Uplink: QPSK\16QAM	
	WCDMA	Downlink: QPSK, Uplink: BPSK	
	GSM	Downlink: GMSK, Uplink: GMSK	
ANTENNA			
Dual Antenna Bands	690-960 / 1710-2700		MHz
Antenna Type	Outdoor		
Antenna Connector	RP-SMA or N plug <sup>(3)</sup>		
VSWR	≤4.0		
Gain	2		dBi
Polarization	Vertical		
Material	PC Lexan 503R-WH5151L or WH8G952 Sabic		
Dimensions (Length x Diameter)	7.87 x 0.78 / 200 x 20		in / mm
STANDARD COMPLIANCE			
EMC and Radio	Global: GCF, Europe: CE, Australia & New Zealand: RCM, Russia: FAC		
RoHS	Yes		
INSTALLATION SPECIFICATIONS			
Dimensions (L x W x H)	3.07 x 1.27 x 0.55 / 78.2 x 32.5 x 14.2		in / mm
Operating Temperature	-40 to +85 / -40 to +185		°C / °F
Mounting	Built into the inverter or purchased separately		
Power consumption	LTE: 2.8 (@23dBm output power) GSM: 2.4 (@33dBm output power) WCDMA: 2 (@24dBm output power)		W
SIM CARD HOLDER			
Type	Nano Sim		

(1) Optional 1-year extension plans should be purchased separately. Part numbers: CELL-R01-EU-EXT-S3 for residential systems and CELL-R01-EU-EXT-S5 for commercial systems

(2) Customer is responsible for verifying that the site location has adequate mobile coverage by the third-party service provider prior to any installation by accessing

<https://solared.ge/cellular-cover-age-europe>

(3) For larger systems, use multiple cellular plug-ins

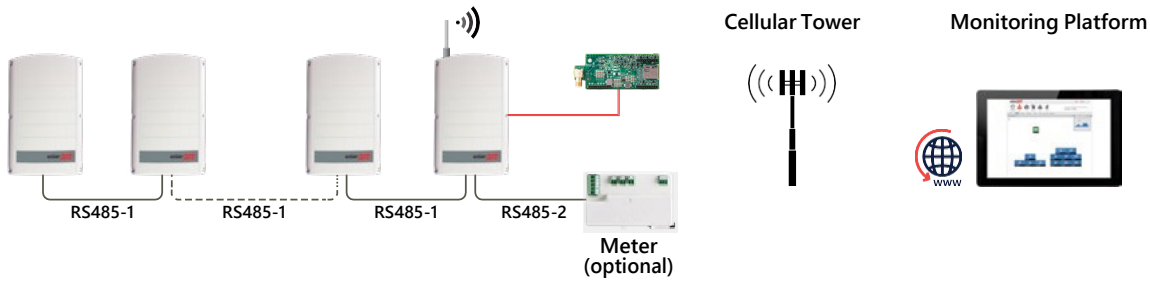
(4) Two types of antennas may be supplied interchangeably

(5) Information concerning the Data Plan's terms & conditions is available in the following link:

<https://www.solaredge.com/sites/default/files/se-communication-plan-terms-and-conditions-eng.pdf>

# / Cellular Plug-in with Data Plan and Extension Plans for Europe

## Single or Multiple Commercial Inverters



## Single or Multiple Residential Inverters

