

2021 

When performance matters



The L.I.G.H.T wing

The Lithuanian Incubator of Green and High Technologies (L.I.G.H.T.) hosts SoliTek R&D, manufacturing & head office in Vilnius, Lithuania.

Constructed by Global BOD Group in 2011.

In 2013 recognized by German Chamber of Commerce as the “Greenest Industrial Building in Europe”.

Production is powered and cooled by renewable energy mix - both solar (150 kW on the roof) and geothermal.





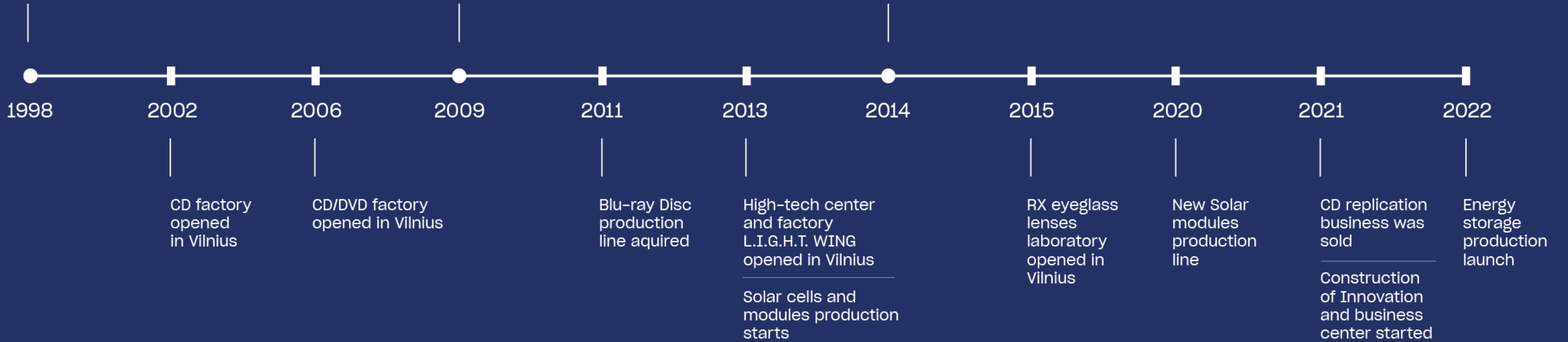
CD replication business is born



Solar energy business is born



Eyeglass lenses business is born

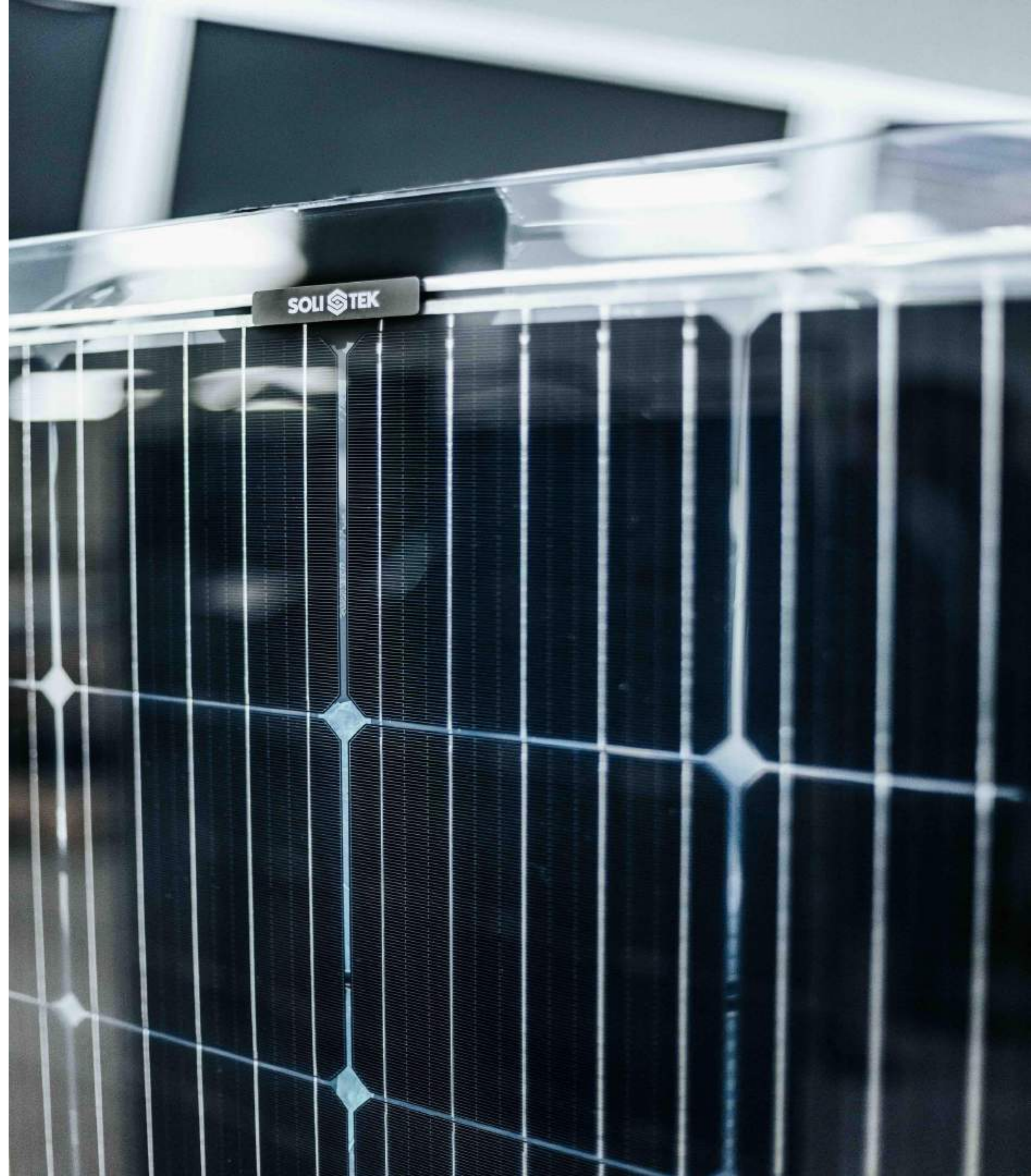


It's all about innovation

Manufacturing innovation is SoliTek DNA. In 12 years we have matured to offer the European market an exceptional new products, that will please even the most refined and demanding customer.

At the core of innovative product lie 3 major elements:

- Bifacial monocrystalline solar cells
- Premium tempered glass to glass lamination
- Flawless industrial design



Partners in research

Universities:

- ISC Konstanz (DE)
- CEA-INES (FR)
- SINTEF (NOR)
- Fraunhofer ISE (DE)
- Fraunhofer CSP (DE)
- DTU (DK)
- KTU (LT)
- VU (LT)
- Protech (LT)



Memberships



Sertificates



Programs

European Commission

Horizon 2020
European Union funding
for Research & Innovation



Cradle to Cradle™ certified

The C2C certification defines 5 components for circular economy compatible product:

1. Safe and healthy materials.
2. Eliminate the concept of waste.
3. Manufactured with clean energy.
4. Protection of water as a precious resource.
5. Respect human and natural systems.



Facts & Figures

SoliTek production, 2020

150k 

Of solar panels

50MW 

Total produced capacity

SoliTek production forecast, 2021

270k 

Of solar panels

120MW 

Total produced capacity



Our customers

60% 

Of our solar panels is exported to Sweden, Finland and Benelux.

85% 

Of our solar panels are exported to EU markets.

The majority are the PV installers, distributors, and project developers in the EU.

Product Portfolio

Product warranty

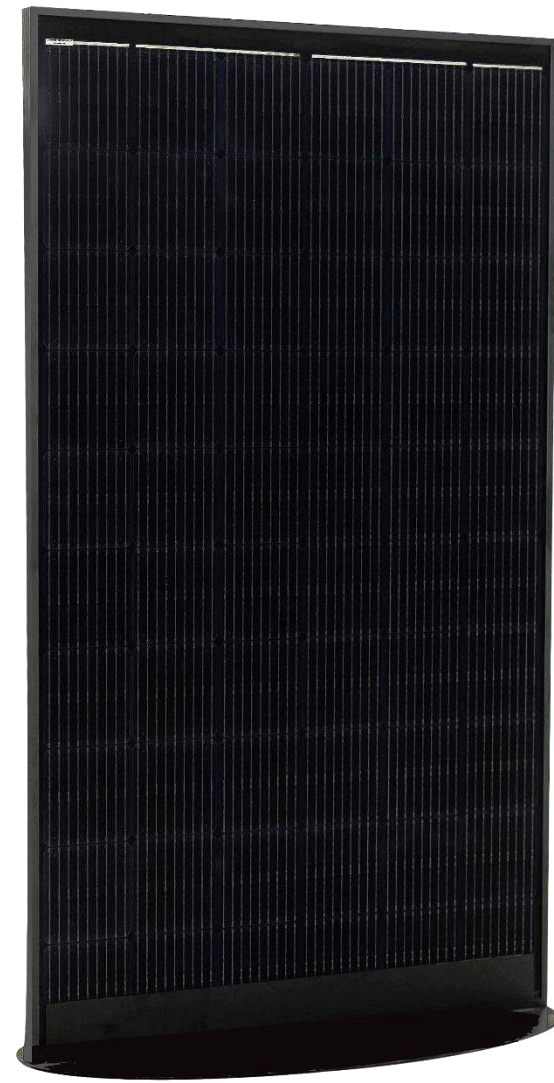
30
Years

Power Guarantee
After 30 years

87%

Efficiency guarantee

30
Years



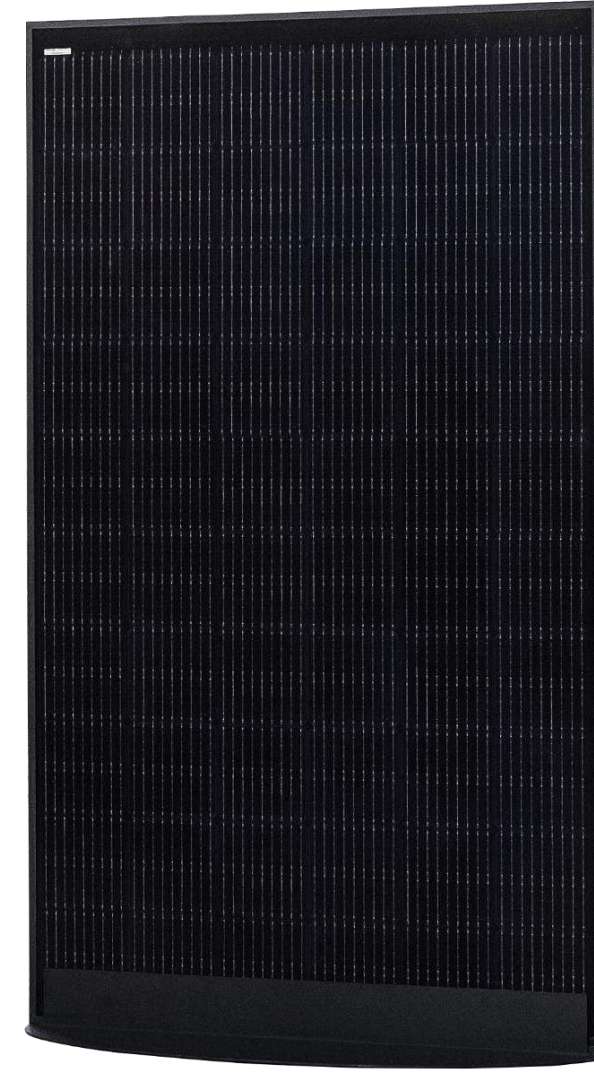
**Glass - Foil
Standart**
360W/365W



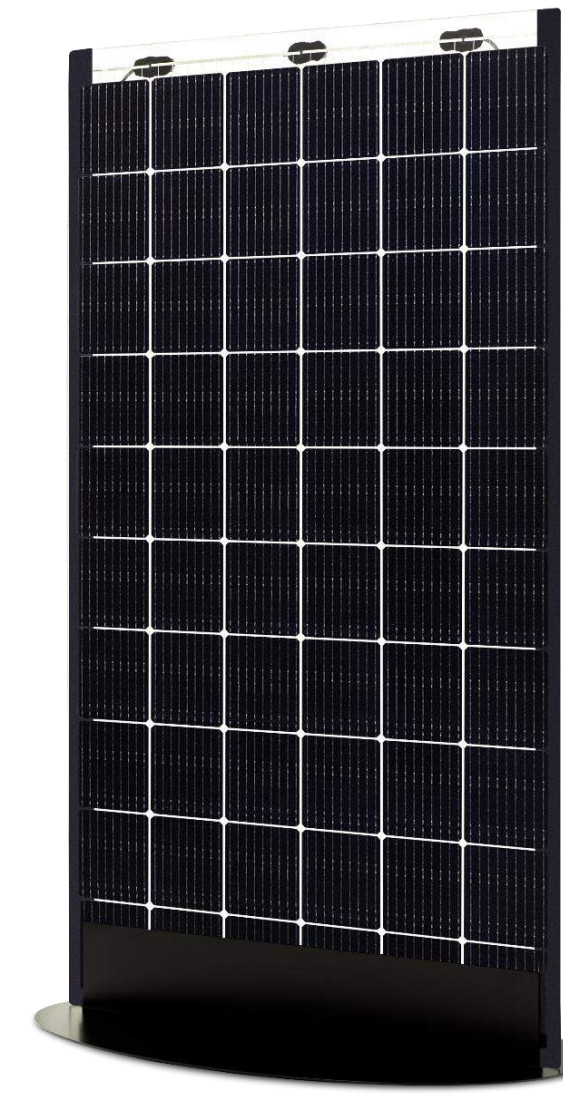
**Glass - Foil
Standard,
Half-cut cell**
360W/370W



SOLID Solrif
350W



**BLACKSTAR
(Solid framed)**
360W



Glass - Glass
SolidWall



SOLID Bifacial
350W



Certifications



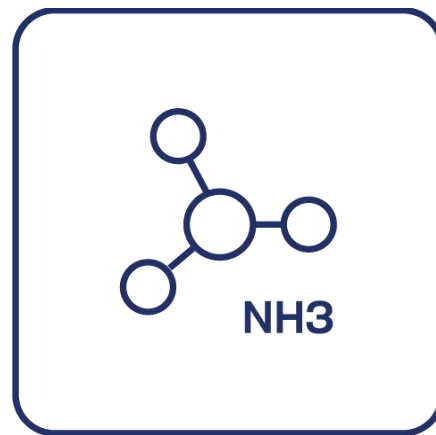
IEC 61215
IEC 61730



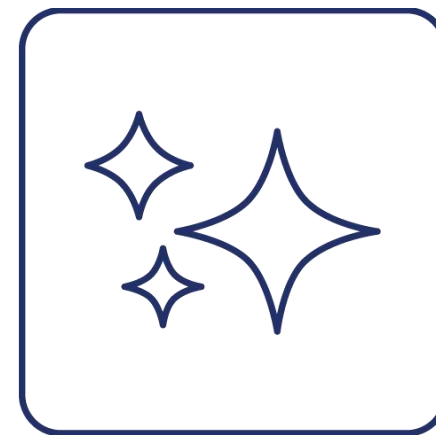
Glass - Glass advantages



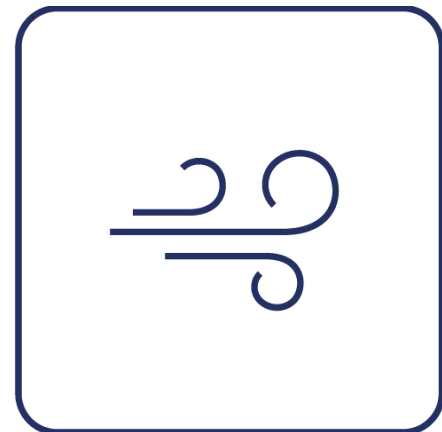
Extreme load resistance



Ammonia resistance



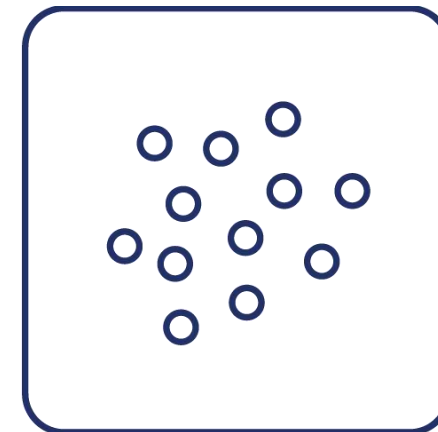
Self-cleaning effect



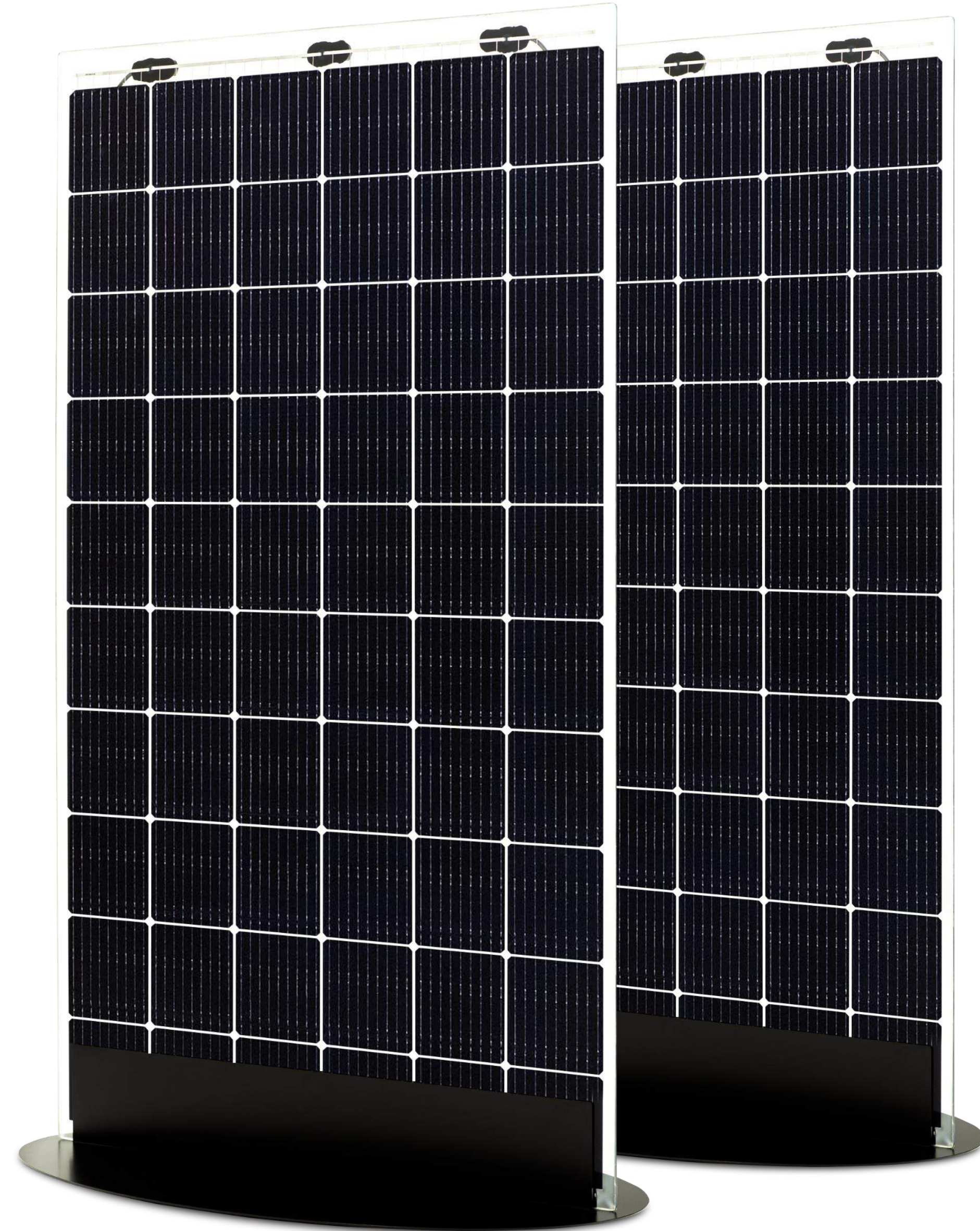
Dust & Sand resistance



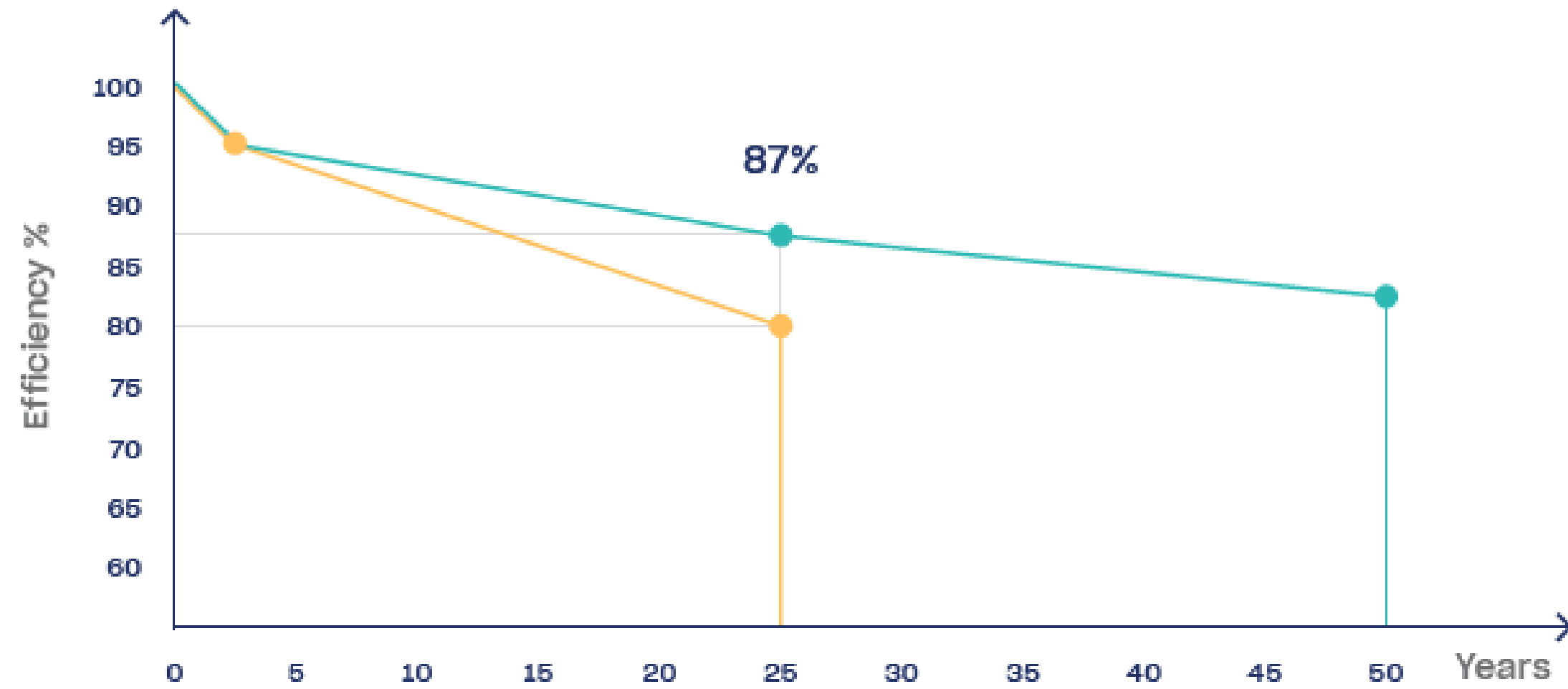
Fire class A



Salt mist resistance



Efficiency is important



Product warranty



Lifetime



Market standard of 12 year product warranty and 25 year efficiency warranty sounds good only on paper. This means that if the panel falls completely after 13 years it is not covered by any warranty.

- 30 years product warranty
- 30 years of 87% efficiency warranty
- 50 years predicted lifetime

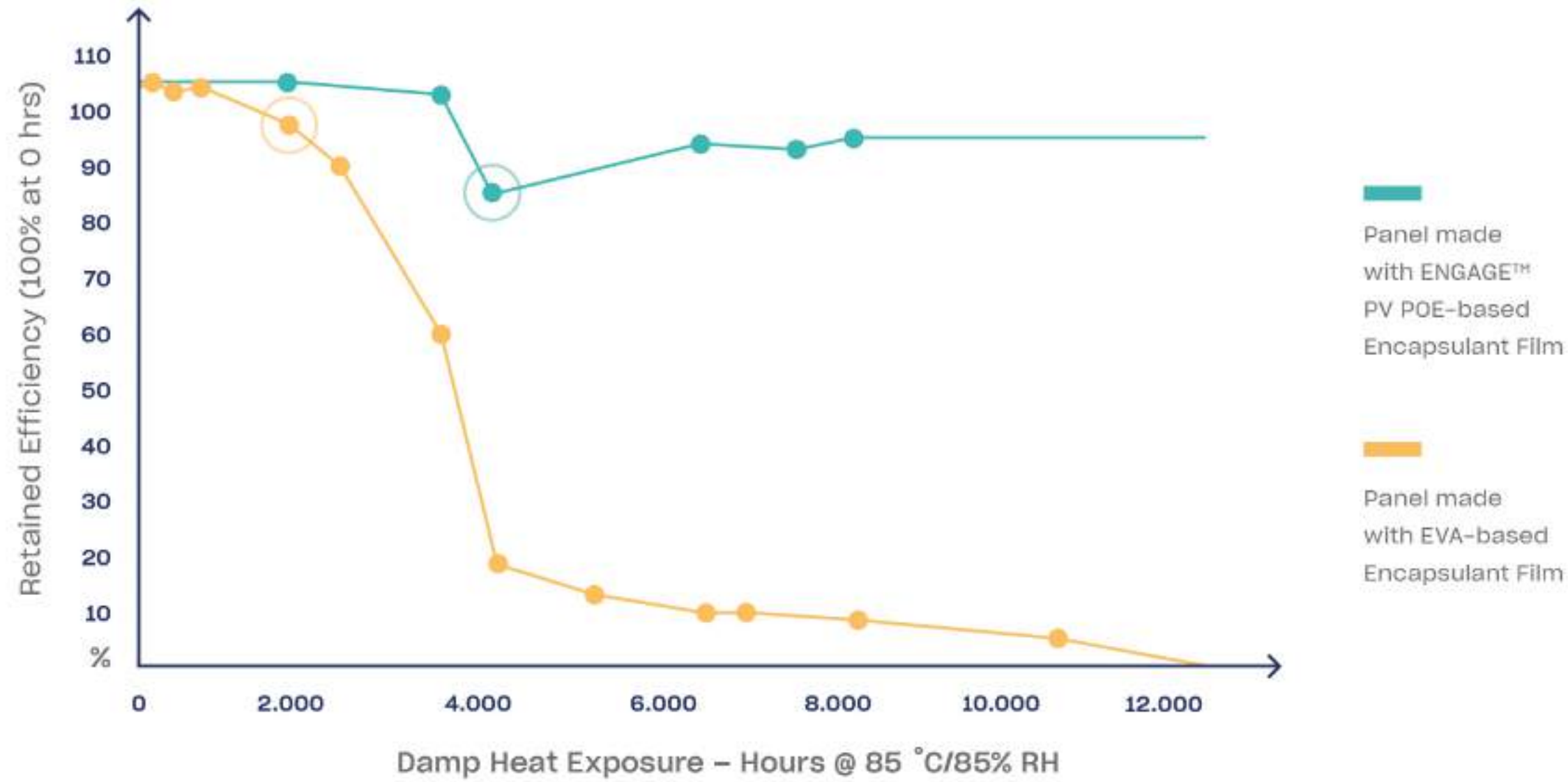
Best choice for your wallet. 30 year savings

A house with a solar PV system **Increases by ~3% in value and sells 20% faster!** It makes sense to invest in a PV system that lasts!

23% more savings!



Poe is the key

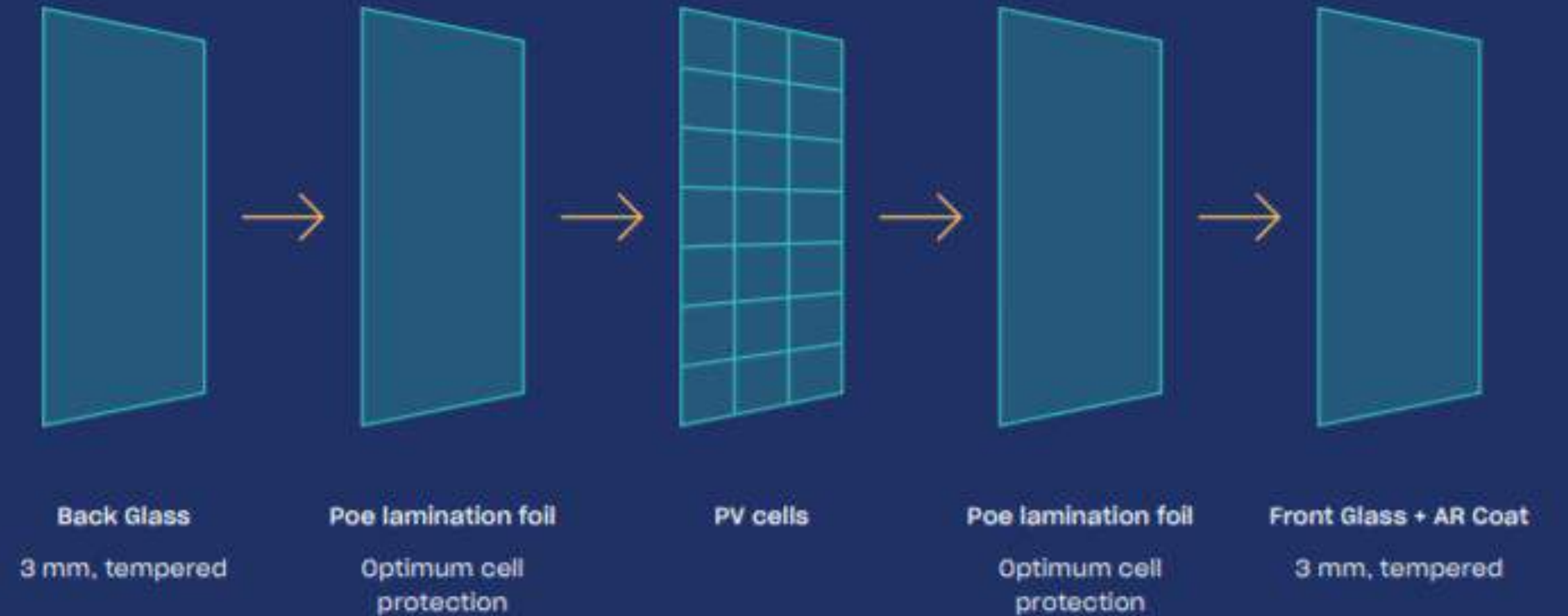


- Glass leaching caused drop in Short Circuit Current; no film or panel degradation.
- Following 1000 h Damp Heat, both panels underwent 50 Thermal Cycles and 10 Humidity Freeze Cycles. Both panels were then placed back into Damp Heat.

Most manufacturers are using EVA encapsulants.
We use POE.

	No Acetic acids	100% Waterproof	No browning	Eliminates PID	Maximum Lifetime	Maximum Lifetime
POE	+	+	+	+	+	50 years
EVA	-	-	-	-	-	25 years

Anatomy of Solid PRO

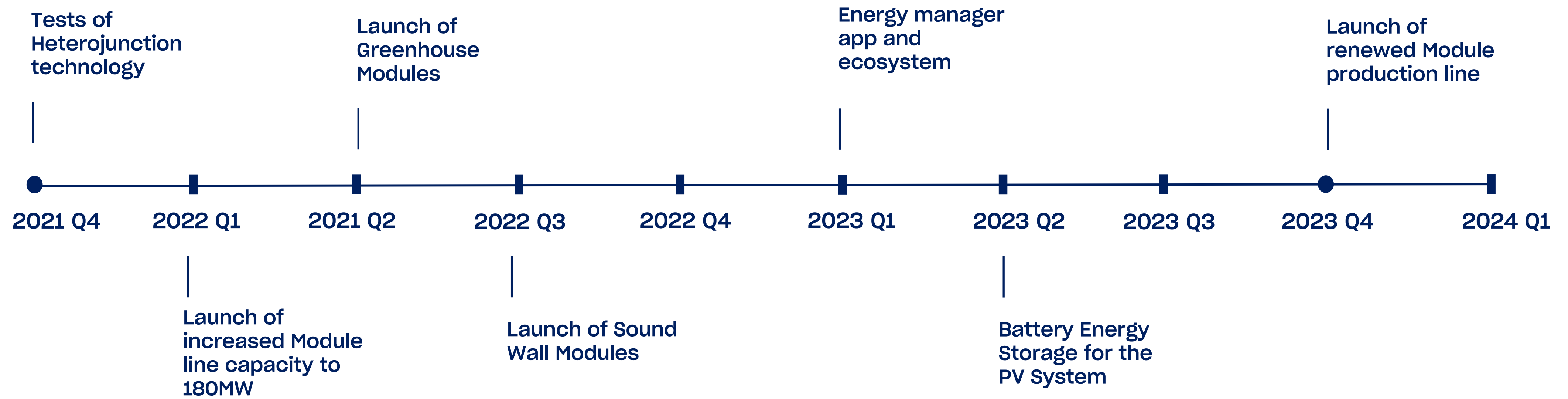


Highest grade materials

Each component plays an important role in the lifetime and performance of our panels. By using only the highest grade materials we are able to offer industry-leading product warranties.

No foil - no weak spot

Backsheet is a 0.4 mm plastic sheet used in most of the panels on the market today. By eliminating this we are able to dramatically reduce the rate of the panel failure.



SOLID Solrif® - solar power plant as a roof

It became possible when we connected our fire class A Glass-Glass solar module SOLID Pro with Solrif® system from Ernst Schweizer AG. We call this system SOLID Solrif®.

SOLID Solrif® is valued for its ability to generate electricity, for its simplicity of mounting and design.

House owner saves money twice: at first on roof tiles, and later - on smaller bills for electricity at least for 30 years. All we need to provide the offer is building location and roof dimensions.



Solrif® frame – Ernst Schweizer AG

- 2 decades of development and improvement
- 1920: Company founded
- 1999: Launch of Solrif® frame and mounting system



Advantages of the Solrif® system

- Easy, fast installation (6 min per module)
- Replaces conventional roofing material
- Waterproof from 10 degrees
- Simplest design on the market
- Tried, tested and reliable
- Ventilated
- Superior aesthetics
- For roof pitches between 10 and 70 degrees (lower slopes require rain-proof or water-tight substructure)
- The system saves the end user considerable sums of money over a period of 20+ years



SOLID Wall – smart and environment friendly solution for façade

- Modern outlook of the building;
- Sustainable and effective;
- Shows your point of view to environment and global warming issues;
- Increases the level of energy efficiency of the building;
- Decreases temperature inside the building on hot season;
- **And generates electricity as well!**

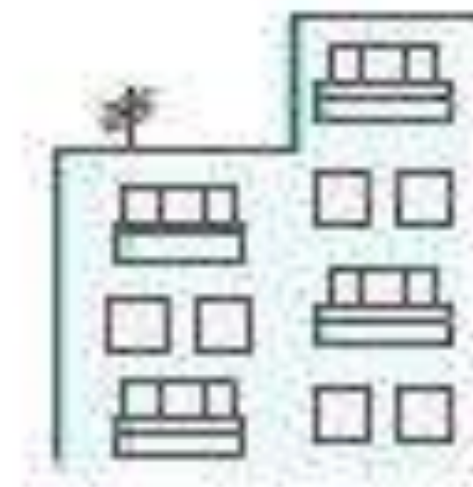


Solid Wall applications

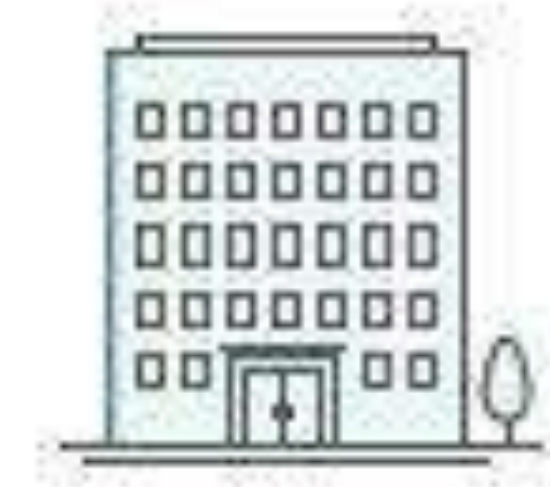
Solid Wall fits to various types of walls.

The system can change even uneven walls to a flat, beautiful external glass wall. Frameless, self-cleaning, shining, Solid Wall façade will look the same for a decades.

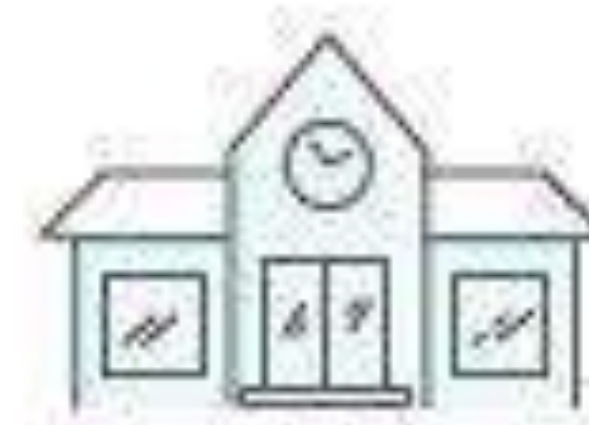
It is very attractive façade solution for various types of buildings. Old or brand new one, small or big – Solid Wall will make it look different.



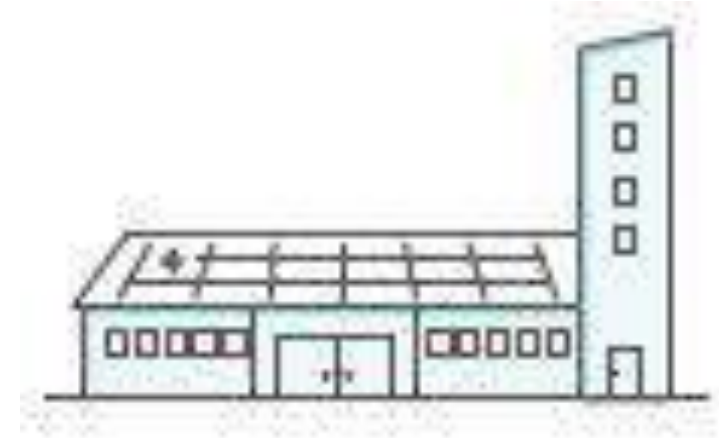
Apartment building



Office building



Public building



Commercial building

SOLID Wall - is it worth it?

44 kW

Wall faced south in the middle of Europe

86.000
EUR in
10 years

Generates approx. 40.000 kWh per year. In EU average prices it is 8.636 EUR



Baltic Disk integrated facade, 12 kW, Estonia



First apartment building BIPV, 42 kW, Norway



SOLID Wall solution, 665 kW, Switzerland

SOLID ePIT

- Wood construction
- With bifacial panels

- 1 car - 5,12 Kw
- 2 cars - 10,24 Kw



Ground mounted solar plants

Electricity delivered to
1100 homes

4.6 MW ✓
Turkey

Bifacial solar plant wit horizontal
single-axis sun tracking system

2 MW ✓
Ukraine

3,4 MW ✓
Lithuania



Energy storage solution

R&D Battery Equipment

2022 Vilnius Lithuania





2021 —

Thank you!

info@solitek.eu

